

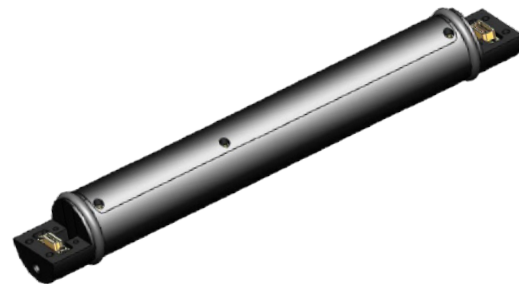
Agilis+™

Universal Pulser Driver with RTC

Agilis+ is a rugged, high-temperature brushless motor controller designed to deliver reliable, power-efficient control for servo pulsers and downhole valve systems in demanding MWD environments.

Features:

- Compatible with servo pulsers from XXT, Telemetry, Benchtree, GE, and others
- Highly configurable to support multiple motor and pulser platforms
- Built-in overcurrent protection and jam detection
- Travel distance learning algorithms and acceleration control
- Integrated flow detection using Rime's Aware Flow Sensor platform
- Three-axis flow state measurement capability
- Embedded sensors for shock, vibration, temperature, voltage, current, and motor energy consumption
- Extensive event and pulse logging capabilities
- External gamma sensor logging for data redundancy
- Integrated real-time clock and keep-alive battery for timestamped logging
- Rated to 175°C
- Proprietary shock isolation and damage mitigation mounts
- Integration with Rime Pulser Interface Program through the Pulser Interface Box
- Supports detailed performance analysis, configuration, and memory logging
- Custom versions available upon request



Benefits:

- Built for survivability in high-shock, high-temperature drilling conditions
- Enhances operational flexibility
- Reduces downtime through intelligent monitoring, adaptive control, and fault detection
- Improves diagnostics and performance analysis
- Increases data reliability and long-term traceability

Specifications

Nominal length	10.75" (273.05 mm)
Makeup length	8.95" (227.33 mm)
O.D.	1.375" (34.93 mm)
Operating voltage	10–40V (20–35V recommended)
Power consumption	~5mA standby, actual consumption dependent on configuration and load
Operating temperature	32° to 347°F (0° to 175°C)
Shock rating	1000g, 0.5ms, ½ sine, 10 times, all three axes
Vibration rating	5–30HZ@1in double amplitude, 30–500HZ 20grms all axes
Operating pulse widths	0.050–2.000 s
Flow switch	Integrated three axis, solid state with high configurability
Memory	8MB non volatile memory with event and statistical data logging
RTC battery life	Lesser of 2,000 circulating hours or 2 years

Agilis+ is also available without a built in real time clock and keep alive battery, see **Agilis** brochure for more details.

Agilis+ is also available in an ultra rugged 200°C version, see **Agilis-HT** brochure for more details.